



Whale Defense Agency's Plan to End Whaling by 2050

Anti-Whaling Sea Control, Area Denial, Logistics and Long-Range Engagement

Introduction

Document Version: Public Version, Approved For Release (11/21/2024 10:18 AM)

The Whale Defense Agency (WDA), founded in 2023, has a singular and transformative mission to end commercial whaling by 2050. As the most aggressive yet non-violent anti-whaling organization in the world, the WDA's operations are deeply rooted in technological innovation, strategic foresight, and direct-action engagement.

Our plan is not an ambitious dream but a carefully constructed, realistic roadmap, developed through in-depth research, advanced field testing, and a combination of manned and unmanned technologies and new future concepts coming into the anti-whaling movement.

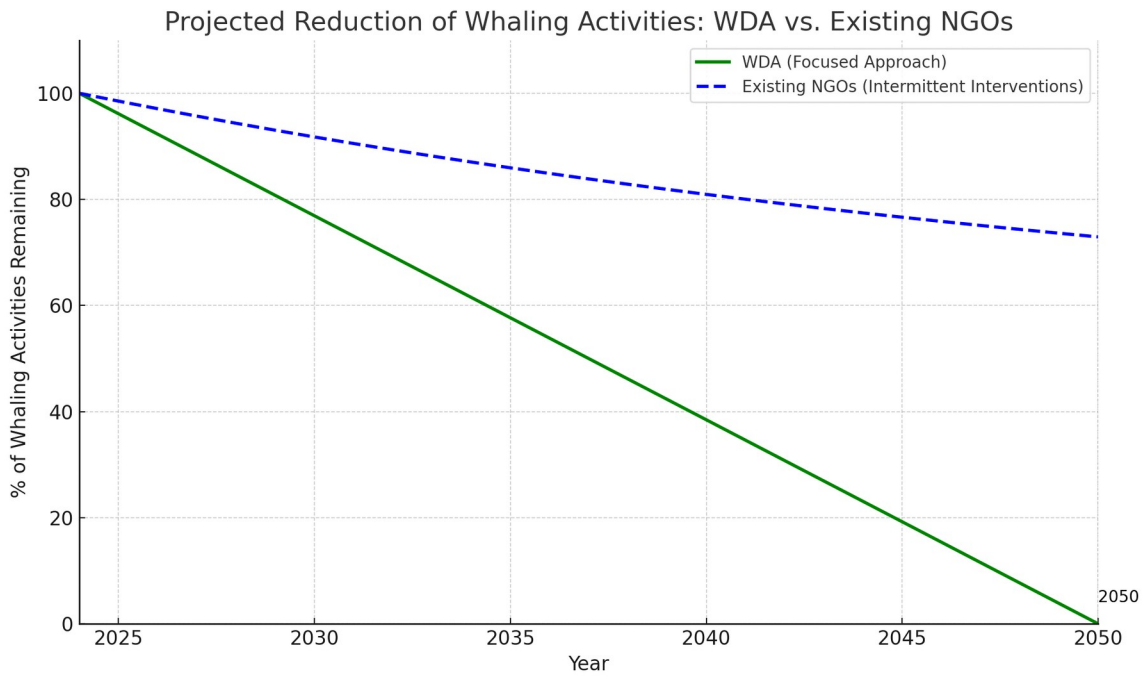
The WDA has committed itself to defeating whaling in every ocean, utilizing our advanced capabilities, highly specialized vessels, and a commitment to protecting the planet's whales. Despite our professional nature, the WDA mission is not compromised by ad-hoc approaches and styles of leadership, engagement or more.

The WDA is positioning itself as the only NGO with the power and technological edge to make whaling obsolete, even against well-funded whaling operations backed by governments. Our operations, led by a fleet of high-speed vessels and drones, are designed not only to disrupt whaling but to eliminate it entirely.

Ending Whaling by 2050

Our mission is clear, to ensure the cessation of commercial whaling globally by 2050. To achieve this, the WDA will engage in direct-action tactics against whalers, deploy cutting-edge anti-whaling technologies, and mobilize global support to make whaling economically, logistically, and operationally unsustainable. By leveraging our rapid-response Anti-Poaching Vessel (APV), long-range unmanned technologies, and new innovations in harpoon interception systems, we are making it impossible for whalers to hunt whales without immediate, effective intervention.

The timeline to 2050 serves as a guiding principle for our strategic plan. However, with our aggressive actions and state-of-the-art resources, we expect whaling to be reduced to minimal levels well before this date once our technology is fully operational (including advanced patrol vessels).



Strategic Goals

This is the foundation of our strategy. By 2050, our goal is to render whaling an obsolete practice, reducing active whaling by more than 90% globally, and enforcing stringent monitoring systems on illegal and bycatch-related whaling activities.

The WDA will dominate the seas with vessels like the APV, capable of over 60 knots and deploying at ranges of more than 10,000 nautical miles. These vessels are supported by advanced drones, anti-harpoon systems, and remote surveillance platforms to outmatch any whaling fleet.

The APV and our unmanned drone fleet will neutralize the operations of large whaling motherships like the Kangei Maru by intercepting harpoon ships and stopping them before they can engage their targets.

We anticipate complete operational failure for the whaling fleet once they realize they cannot defend against our fast, superior forces.

We plan to establish WDA logistical support hubs, training centers, and bunkering ships as mobile sea bases to reduce our reliance on foreign ports. With Paul Watson's arrest, the WDA has taken this as a signal to fully implement self-sustaining operations, including searching for old airfields and decommissioned naval bases for the mission. Retired aircraft like the C-130, modified for surveillance and anti-whaling operations, will further solidify our reach. We advise any current NGO in anti-whaling, to introduce self-sustaining operations as quickly as possible, to render Japanese current legal avenues as irrelevant, if you conduct such direct-action with legal risks.

Responding to Government Threats

The WDA recognizes that our mission will face political and legal opposition from governments that support whaling. However, we are prepared to handle this. In response to extradition threats and potential tailing by government vessels, the WDA will deploy hardened security measures across our fleet and operations. Our high-speed assets, such as the APV, Barracuda, and the High-Speed Hybrid Submarine (capable of over 100 knots on the surface), will ensure our vessels cannot be caught by any government-operated vessel, whether it be the Japanese Coast Guard or national naval forces, ensuring wda can evade hostile nation-states with terrorist intentions against anti-whaling activists.

Our capabilities far exceed what any whaler or governmental agency can intercept, with publicly disclosed systems, and we will leverage this to engage in unimpeded operations across the globe within the framework of international law, to the disbelief and frustration of the Japanese whaling fleet. The fleet of manned and unmanned systems will provide a high level of deterrence, early warning and engagement, eliminating the ability of whaling vessels to carry out their operations.

Technological Innovations Like Harpoon Interception (WAPS) and Beyond

Among the WDA's groundbreaking technologies is the modified Active Protection System (APS) which the Whale Defense Agency has been in contact with defense industry experts to develop a completely custom system that is ITAR free and can allow us to end whaling anywhere, anytime, without harming the whalers and without the whales being hurt in the process of the interception, a game-changing development that intercepts harpoons in mid-flight, neutralizing them within milliseconds of being fired. This technology, when deployed on vessels and drone vessels, will make harpoon hunting impossible. It's a first-of-its-kind innovation that puts whalers on alert their weapons are no longer effective.

Unmanned technologies will also play a key role in field operations. From prop-fouling UUV's, high-speed interceptors, and drones capable of autonomous swarming tactics, these systems will operate at ranges of over 2,700 nautical miles, delivering a non-lethal combination of real-time intelligence, disruption, and engagement at levels unseen by the whaling fleet or any global whaling operator. Our unmanned systems will allow the WDA to cover vast ocean areas, keeping constant pressure on whalers and limiting their operational windows.



Image: WDA Contacts Defense Company For Inbound Harpoon Interception System

Building the WDA Fleet And The Future of Anti-Whaling Operations

The WDA's strategic fleet includes not only the APV and Barracuda patrol vessel but also a hybrid submarine, capable of remaining submerged for an entire year without refueling. This vessel will engage in covert anti-whaling operations, conducting surveillance and non-lethal tactical strikes on whaling fleets and their motherships. With its ability to travel over 100 knots on the surface and remain undetected underwater for extended periods, this submarine represents the pinnacle of anti-whaling assets and our way to deliver uncertainty for the whalers and those operating whaling vessels.

Other vessels in the fleet, such as the Barracuda, are being developed for specific missions to intercept and disable whaling ships before they can engage in their hunts. The combination of high-speed craft, unmanned assets, and land-based operations support gives the WDA the tools to decisively engage any whaling fleet, regardless of the backing they may have from local governments.

The Whale Defense Agency is not just another anti-whaling NGO. We are the future of ocean conservation, and we have the tools, the technology, and the tactical vision to end whaling by 2050. Whalers, security fleets, and government agencies will be unable to stop the onslaught of rapid-response

actions, sophisticated intercept tactics, and unmanned engagement strategies the WDA brings to the table, in addition to the full-range of digital options the agency has.

With the full might of our fleet, technological prowess, and determination, the Whale Defense Agency will ensure that by 2050, commercial and research whaling will be a relic of the past. We are confident, and we are ready. The question we've asked ourselves to get to this point, is why have no others stopped whaling, or presented any clear path forward, and we've observed, to find this approach as the credible one that can end whaling, although costly, it will be worth the effort. Anti-whaling makes a lot of money for fundraising in other NGO's, and WDA is not in the mission of making money, we are in the mission of ending whaling, and so seeing this technology now makes many wonder what others were doing this whole time. The technology exists, but the lack of focus, and drive or pursuit of new technology or concepts is the reason anti-whaling has mellowed out.

For every problem, there is a solution, but no one has showcased the dedication or drive, like the Whale Defense Agency with this hyperfocused approach. For many, this tech is new, for many, it seems impossible, but for our team, we've been living this for over a decade in secret as we built up this array of capability, and our emails, our contacts, our ship concepts, our strategies, our documented evidence of engagements and more, it is real, and it is of course concerning for NGO's and the whalers who have not focused as much as we are. Our NGO has blindsided many on both sides, especially with the sheer scale of WDA, and the fact the APV is a real world design and real project, of course the whalers are concerned. Their building new ships is a sign of fear, of the fact they can no longer feel safe in operating, that they must assure confidence, by building more whaling ships in response, placing them in a reactive position rather than a proactive one, and which WDA will always come out on top, by design, through specially engineered ships and platforms.

It is also very telling, when those who troll WDA online are forced to admit that the APV can disrupt whaling. Facts speak for themselves, and 60 knots is a pretty severe statement. They'll have to build a faster harpoon ship, and we have additional designs that we've not yet fully disclosed, capable of reaching over 100 knots, so the agency is well prepared in terms of ship design, at least a decade of concept and more on various designs and strategies. What you see today, is a very small portion, of the massive document at WDA, carefully recrafted here for public disclosure. It goes into the ships, crew, leadership, and a host of other things we cannot disclose further on.

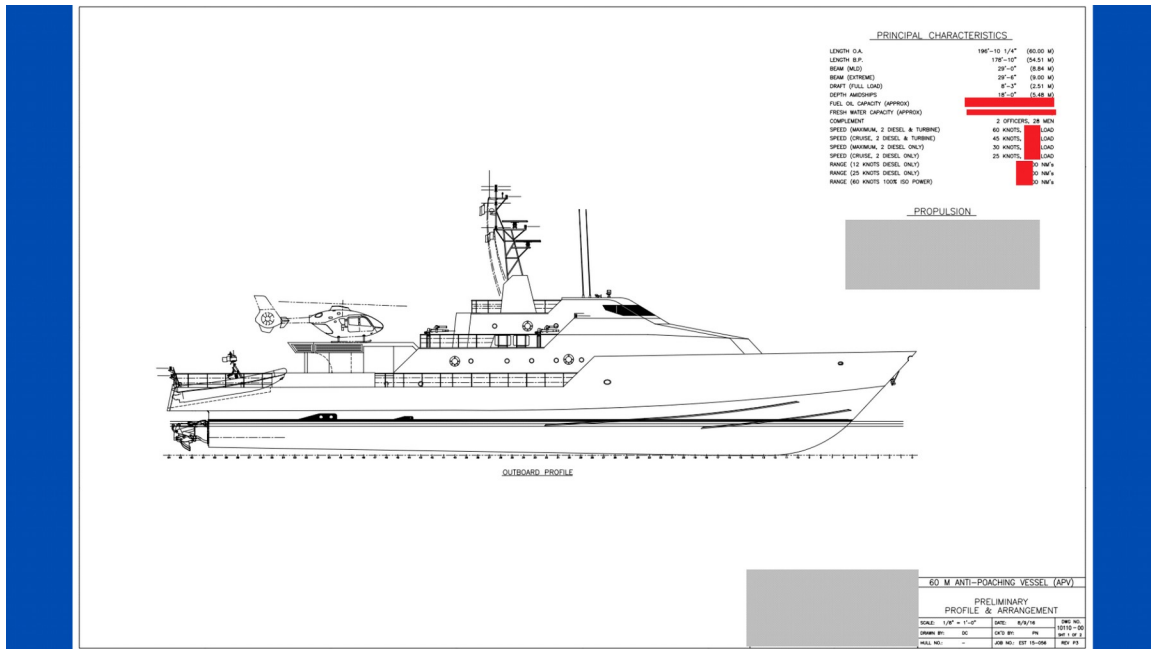


Image: The 60 meter long, 60 knot patrol vessel (The APV, known as Kangei Hunter).

As part of our bold plan to eradicate whaling by 2050, the Whale Defense Agency (WDA) will focus on laying the foundation through several key initiatives, starting with cutting-edge research and development (R&D), the expansion of a formidable global fleet of advanced vessels and unmanned systems, and direct-action operations. These assets are designed to create an unbreachable blockade of protection around whales in any known hunting region, while causing severe disruption to the whaling industry's active whaling operations, logistics, morale, security and profitability.

The WDA's approach begins by targeting the most active whaling fleets, namely the Japanese whaling operations centered around ships like the Kangei Maru. The strategy involves leveraging the APV and other high-speed vessels to confront, neutralize, and eventually end these operations altogether, demonstrating to all whaling industries that the age of unchecked hunting is over.

Ending whaling by 2050 requires a comprehensive strategy that incorporates more than direct confrontation on the high seas, it also requires the plausible action of sinking these whaling vessels in direct response to the at sea or legal based actions of the whaling fleet. The WDA will implement a multi-pronged approach that targets every aspect of the whaling industry's infrastructure. This includes direct engagement, logistical interference, technological superiority, covert sabotage, whaling ship sinkings (up to the point of 23 being sunk at once in a coordinated operation across the globe if required to send a warning to whaling operators to cease actions, or face increasing direct-actions), political pressure, and public awareness. The aim is to ensure that not only do whalers fear operational failure every time they leave or remain in port, but that global sentiment, regulations, and economic conditions also make whaling unsustainable in the long-term.

At the heart of the WDA's operations is our commitment to direct-action engagement with whaling fleets.

This includes a range of tactics, such as prop-fouling, ship boardings, and advanced interception techniques, and other covert means of intelligence gathering or intervention. Our fleet is designed for speed, maneuverability, and resilience, able to operate in the most remote parts of the oceans for extended periods without the need for refueling. The APV, known as the Kangei Hunter, is the centerpiece of these engagements, outfitted with advanced tracking systems and capable of reaching speeds over 60 knots,

allowing it to outpace and outmaneuver even the fastest security ships defending the whaling fleet.

The WDA's direct-action teams, onboard the APV and other support vessels, including leased surveillance assets, are specially trained to carry out non-violent but highly effective interventions. From disabling whaling ships' propellers to forcing them back to port before they can complete their hunts, the WDA has the capability to prevent whales from dying during an active whale hunt and pursuit, and has a zero-percent kill rate of whales dying during our operations through highly coordinated efforts that leave whalers confused and unable to respond. By 2050, our goal is to have reduced active whaling attempts to almost zero percent, leaving a negligible impact on whale populations worldwide where government and policy based efforts can finish off whaling for good.

Technological Superiority And The Weaponization of Innovation For Success

Technological innovation lies at the core of the WDA's ability to outmatch and outlast whaling fleets. The development of the Active Protection System (APS), which can intercept harpoons mid-flight with a millisecond response time, represents a game-changing technology that will make the act of harpoon whaling obsolete, but is yet to be deployed or further developed by the agency as we've found for now, short-term means of making harpoon guns obsolete using our engagement tools to destroy the harpoon.

Using sophisticated sensors, advanced radars, AI algorithms, and high-speed countermeasures, the APS can neutralize harpoons within milliseconds of launch, preventing them from striking a whale. This technology not only saves lives, but it sends a strong message to whalers, that their weapons are no longer viable, and that they will continue to have their capabilities eroded at such advanced levels. Even if the APS is not deployed, there are other options for WDA to render harpoon guns obsolete, at least with the presence of WDA nearby, this can be performed.

In addition to APS, the WDA is deploying a fleet of unmanned vessels, drones, and autonomous submarines that can engage in a range of operations, from intelligence gathering to active disruption. These unmanned systems can operate in tandem with our high-speed vessels, extending the WDA's reach and ability to track and disrupt whaling ships across vast ocean territories. These systems also carry out prop-fouling operations, forcing whalers to abandon hunts prematurely.

WDA vessels are equipped with torpedo like tubes within their hull design, this includes the APV and the Kangei Hunter, as well the submarine, with the ability to launch unmanned prop-fouling systems without revealing themselves or the actions, enabling WDA to destroy the whalers legal documentation efforts and allowing WDA to continue prop-fouling actions while disabling the whalers ability to record the action for legal or other future undisclosed reasons.

The future of WDA's technology lies in even more advanced systems, such as drones capable of delivering anti-harpoon engagement systems and anti-whaling liquid air dispersed deterrents based upon the design of Butyric Acid but a modified solution the agency is calling Buytric Helix-87, which will last for months, and if attempts are made to clean the chemical agents on their ships with common cleaning agents, the chemical agent is engineered in a way that the smell is made much worse when using traditional cleaning agents, and forcing the whalers to come to WDA for the cleaning solution, where WDA can then demand the end of whaling before giving access.

This also render Japanese legal threats baseless and ensure safety of WDA operations, as with each threat, WDA can effectively cover their ships in a solution that lasts for months, and common cleaning solutions

will cause a reaction of the chemical agent that will actually worsen the smell. Helix-87 is engineered to be more potent than rubbing alcohol in terms of smell, but is far superior, and can be deployed in safer, pinpoint operations using drone based systems to avoid crew, thus reducing their legal threats and strategies.

Helix-87 is non-toxic and non-invasive very intense foul smelling chemical agent for anti-whaling crowd control, custom engineered by the Whale Defense Agency's for-profit entity for Anti-Whaling Technology Research and Development for use in the Faroe Islands, and against whaling vessels. This firm, unlike WDA, can withhold its annual reports, being an LLC, therefore the whalers will never have the public intel they need, and this firm grants WDA access to the technology, which it is not authorized to share publicly, even as an NGO, due to IP laws on the chemical agent and other technologies.

In addition to high-speed sea surveillance platforms, and autonomous underwater vehicles (AUVs) that can prop-foul and disable whaling vessels in stealth, reducing the whalers legal claim capacity and reducing any evidence collection capability via video documentation, reducing exposure of WDA operatives and operations from legal threats by the Japanese whalers or others supporting the whalers is apart of WDA core operations against whaling.

As these technologies, strategies and approaches develop and undergo field testing, they will become the backbone of our anti-whaling strategy, ensuring that by 2050, whaling vessels and their entities, including legal strategies and approaches will be wholly unequipped and systematically destroyed by design and ensure they are unable to face the WDA's technological, operational and legal prowess and anti-documentation of field action plans.

As part of the WDA's 2050 plan, we are expanding our logistical capabilities to sustain anti-whaling operations anywhere in the world. A critical part of this strategy is the new plan of acquisition and use of bunkering ships that act as mobile sea bases, allowing the WDA to refuel, resupply, and repair vessels, without relying on foreign ports, an instance that cost the Paul Watson Foundation the loss of their founder Paul Watson at the hands of Danish / and Greenlandic custody and having dismantled their organizations plans to engage the Kangei Maru in the Pacific. This shift towards complete operational autonomy and new covert operations and announcement structure, spurred by the recent arrest of anti-whaling activist Paul Watson, ensures that the WDA can continue its mission without political interference.

Even with direct-interference or unplanned arrests, WDA has pre-determined plans of engagement, based on specific actions taken, covering a comprehensive range of their tactics, from legal, direct-action, arrest, attempted extradition, security, and even military or coast guard support. This can range from sinking their whaling vessels, to sabotage, to recruiting intelligence officers in their ranks, to a host of other undisclosed covert capabilities, and high-threat, high-stakes response plans, with embedded agents in Japan.

In addition to our mobile sea base strategy which will resupply at friendly ports or ports of the state of the nationals operating the vessel, the WDA is establishing land-based operational hubs for a host of operations. Retired airfields and retired naval installations, across Alaska, Hawaii, Guam, and other strategic locations will be repurposed into anti-whaling logistical centers and support hubs and command and control office building, with reflective glass panels, and several stories tall.

These will be placed, or actions performed in nations friendly to anti-whaling activism, who will host this infrastructure, mainly in the United States with global reach capability. These bases will then serve as training centers, maintenance depots, and launch points for both manned and unmanned missions, patrol ships and more, giving the WDA the global reach it needs to stay ahead of whaling fleets, and match the

U.S. Navy in terms of global reach and area denial for anti-whaling, on smaller scales, which will further complicate the whalers ability to respond, or effectively make decisions.

The WDA was in negotiations to acquire long-range surveillance drones and has completed that, we've even been in discussions with a drone firm to use their \$500,000 drone with extensive ranges over 500km. In addition, aircraft such as the C-130 are being actively considered, which would be refitted for long-range surveillance, anti-whaling reconnaissance, and supply drops to our vessels at sea, among undisclosed enforcement capabilities through airborne direct-actions.

This aerial advantage will enhance our ability to track and disrupt whaling fleets over vast distances, far beyond the whalers own operational capabilities, and at reasonable cost for the agency and its for-profit firms, like AWT, which operate as an LLC, able to fund advanced tech and other covert operation funding of direct-action without the NGO reporting requirements, allowing WDA to bypass a critical avenue of intelligence collection by the whalers.

Political and Legal Preparedness For Defying Government Pressure

Recognizing the potential legal and political challenges that arise from disrupting well-protected whaling operations, the WDA is taking steps to safeguard its assets and personnel. Governments that support whaling, such as Japan, have historically taken aggressive legal measures against anti-whaling activists. In response, the WDA has implemented a robust legal and multi-entity framework to protect its operations and members from extradition, legal action and other threats, by implementing the required policies that ensure a repeat of Paul Watson's arrest is never done again, and that if it is ever tried, that it is complicated systematically by design for each step of their intended process, such as preventing them from documenting evidence in the first place, by going undersea with some capabilities, WDA can deny them footage used to control anti-whaling forces in court or otherwise maintain their confidence and legal standing.

Without clear evidence of a prop-foul, taking legal action will become increasingly more difficult by design, as we systematically take away what they are using against anti-whalers, and thus we can disrupt their public information disclosure at will. The more they use these tactics, the more we are able to observe and adapt to it and degrade such tactics to the point they are essentially non-viable by design, and because we find great joy in overcoming the whalers tactics at WDA, we constantly evolve, that some of our own tech can be outdated.

We advance far beyond the level of any current known NGO in anti-whaling, and we take the mission far more serious than any of these other agencies. We've outdated 99% of the threats the whalers presented to Sea Shepherd, and heavily observed the latest and past court actions, to observe Japanese tactics in pro-whaling efforts, and have found the exact weakness to exploit to our advantage, which now places the Japanese back to the first era where Japan engaged the Sea Shepherd during the Robert Hunter and Farley Mowat era. the main problem now, is that we're at least a decade ahead of them in this regard (the whalers), as we secretly have developed solutions prior to launching WDA.

Learning from this moment in history, it will be hard for them to do this again, even with a hidden interpol notice/ alert worldwide. The WDA aims to defeat this by using bunkering ships and mobile sea bases to render the use of foreign ports and nations as a non-viable option for Japan to illegally and questionably arrest anti-whaling activists, and enable WDA agents to bypass such efforts. There are means to travel the world beside an airline, and these can be avoided by design, further eroding their

tactics and plans of "arrest" or "intercepts", while further assisting anti-whaling in becoming more self-reliant and less dependable on foreign ports and such scenarios like this that could hurt anti-whaling efforts.

The WDA's hardened security measures include encrypted communications, color-based communication signals (flag based) which are already in place during high-seas engagements, covert operational planning, and legal defense funds to support our activists if they faced arrest. We are also forming alliances with governments and international organizations and those in government positions and congress, to increase political pressure on nations that continue to support whaling, and to provide WDA with occasional location intelligence updates in real time, allowing WDA to avoid costly surveillance that it would fund otherwise. Additionally, we are leveraging public support to shift global sentiment towards stricter enforcement of anti-whaling laws and policies, including adding new laws to the current ban on whaling, and implementing life in prison, international laws, or the death penalty for whaling actors, to increase the threat risk of continuing whaling.

When faced with tailing or surveillance from government or security vessels, the WDA is fully prepared to respond with our high-speed assets, outpacing any pursuers and continuing our operations unimpeded. The APV's speed, combined with its onboard defense systems, ensures that we remain untouchable on the high seas. Our strategic use of hardened vessels, plans, tactics, drones, and unmanned systems will allow us to maintain the upper hand in all engagements, leaving whaling fleets unable to counter our presence effectively. WDA ships are designed to deter and overpower whaling and security operations, including helicopter boarding operations and rhib based actions. APV can deliver over 15,000 volts to any person boarding the vessel.

To achieve our goals, public perception and support are of course key, this is not a secret. The WDA is not only an action-oriented organization but also a force for global education and advocacy. Our recent engagements against whalers, our feature on CNN, as well as coverage in other outlets, has already placed the WDA at the forefront of the anti-whaling movement. With every direct-action victory, we will continue to broadcast the success of our operations, making it clear that whaling is no longer a profitable or viable practice. We are building a coalition of global citizens who stand against whaling, encouraging them to support our mission through donations, advocacy, and direct engagement.

The WDA is also developing educational campaigns that highlight the brutal reality of whaling, showing the world that modern technologies can protect marine life without harm to economic interests. These campaigns will include documentaries, public service announcements, and viral social media content aimed at mobilizing global outrage and turning the tide against whaling.

The Future of Anti-Whaling Legacy and Long-Term Impact

As we move closer to 2050, the Whale Defense Agency's operations will become increasingly refined, expanding into new territories, technologies, and tactics. While our goal is to eradicate whaling, our broader vision includes establishing permanent protections for all marine life, enforcing global regulations on bycatch, and fostering a culture of environmental stewardship.

The WDA will leave a lasting legacy, not just as the organization that ended whaling, but as the agency that redefined the possibilities of conservation through innovation, direct action, and relentless pursuit of a better world. We will leave a legacy of being the only anti-whaling charity in history to use a sea control strategy, to monitor military trends, and to observe our actors in a comprehensive manner. By 2050,

whaling will no longer be a concern, but the WDA will continue to operate, ensuring that marine ecosystems are protected for generations to come.

The end of whaling would not mean the vessels go on to other missions, their deterrence capacity will be critical in the final years of whaling and well after, and while the vessels may conduct other conservation missions after the end of whaling, their primary focus will still be to train, maintain and ensure dominance over whaling now, and in the future, even if it ends in order to prevent it from returning.

In the end, the WDA's success will not only be measured by the end of whaling but by the survival and thriving of the whales themselves majestic creatures that have, for too long, been hunted for profit. We will not stop until every harpoon has been laid to rest.

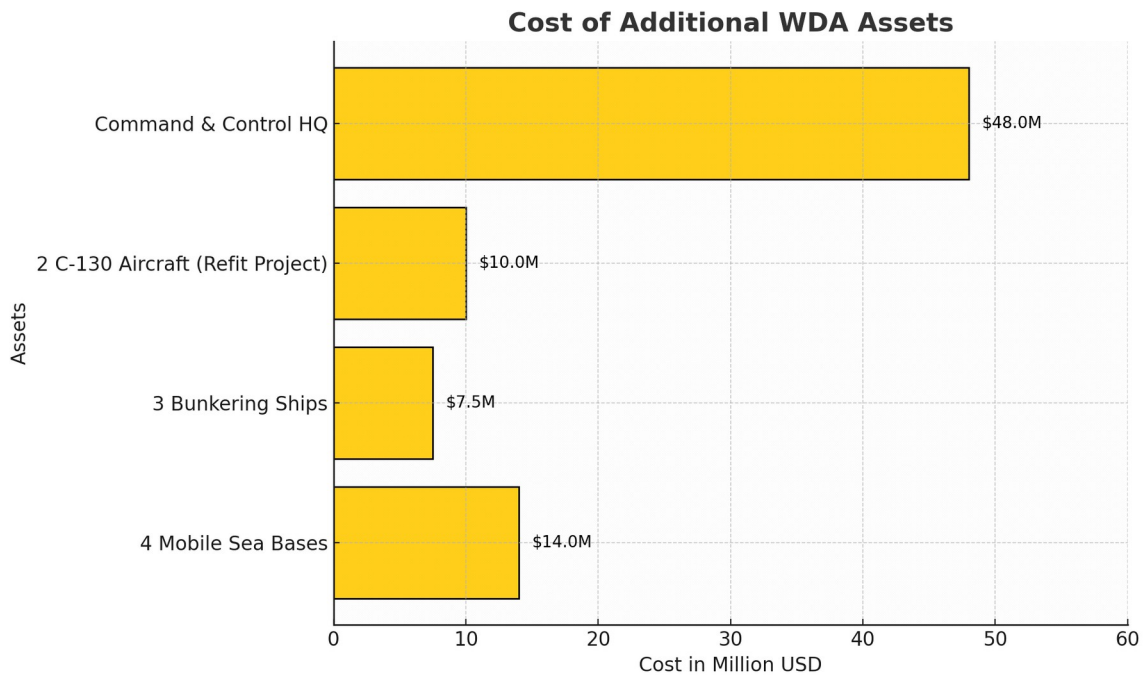


Image: Graph showcasing projected costs of the Whale Defense Agency's anti-whaling sea control 2050 plan.

Sea Bases, Logistics Hubs, and Global Reach for the 2050 Vision

To ensure the eradication of whaling by 2050, the Whale Defense Agency (WDA) is developing an intricate global network of operational hubs, sea bases, and logistical infrastructure. These initiatives are designed to sustain long-term anti-whaling campaigns across the globe without reliance on politically controlled or compromised territories. By creating a decentralized, distributed autonomous system for fueling, resupplying, and coordinating missions, the WDA aims to disrupt whaling activities with unprecedented persistence, reducing the industry's capacity to operate effectively.

The foundation of this strategy is the establishment of floating sea bases, land-based logistical hubs, and air support facilities to ensure that no matter where whaling occurs, the WDA is always ready to intervene.

One of the most transformative aspects of the WDA's strategy is the deployment of floating sea bases, which will serve as mobile command centers, refueling stations, and resupply depots. These sea bases, typically large converted vessels or modular floating platforms, allow our fleet to operate far from traditional ports. This autonomy is crucial, as relying on foreign harbors can lead to delays, political roadblocks, or even the seizure of WDA vessels for disrupting whaling.

The mobile nature of these sea bases allows them to follow whaling fleets into remote regions, providing our ships with the support they need to stay at sea for months or years at a time, with persistent fueling, storage, engagement, and other aspects.

Each sea base will be equipped with:

- **Fuel Storage:** Allowing the WDA's fleet, including the high-speed APV and its interceptors, to refuel mid-mission. This removes the need to return to shore, keeping our assets in constant pursuit of whaling vessels. It removes a threat of WDA assets being arrested in port. WDA can transfer fuel in other ways to these sea bases, thus avoiding the need to return to a port, or pass by an unfriendly nation, forced to stop for fuel.
- **Supply Depots:** Housing essential supplies such as food, equipment, and repair parts for extended missions. This ensures that our crew can remain at sea for long durations without resupplying at conventional ports.
- **Repair Facilities:** Offering basic to advanced repair capabilities to maintain and service WDA ships after engagements. Quick turnaround times allow our vessels to return to operational status within hours or days, not weeks or months.
- **Drone and AUV Deployment:** Sea bases will serve as launch points for drones, unmanned aerial vehicles (UAVs), and autonomous underwater vehicles (AUVs) used for surveillance, tracking, and disruption operations. This allows for greater operational flexibility and the ability to cover large areas of ocean from a central location. These sea bases will also provide additional intelligence and radar observation and long-range air operations. WDA can create a lilpad effect using USV's launched from these bases, to hop across thousands of miles, providing real-time intelligence over long-range, in excess of 1,100 nautical miles, and well in excess of 2,500 nautical miles.
- **Medical Units:** Equipped with medical facilities for treating injuries and health issues sustained during long missions. This reduces the need to return to land for medical attention, keeping our crew fit for duty during extended operations, and acts as a mid-point drop-off for further land-based transfer if required should a situation worsen on-board, then long-range helicopters with a 1,000nm range would be tasked with the mission. These long-range helicopters are from an undisclosed firm, and they are real concepts, proven at a military level, and with civil and military options, with the same ranges. These are apart of our core strategy to use the latest trends in technology for anti-whaling, where we can.

The floating sea bases will act as the heart of WDA's global operations, providing our fleet with near-unlimited operational range. These mobile bases and command and control facilities will ensure that we remain on the heels of whaling vessels, even in the most remote corners of the ocean or in areas with hostile foreign ports and where the agency must operate, but would be otherwise unable to, due to the hostile nature of a possible nation-state, and refueling would be dangerous and reckless if the state is

pro-whaling.

To complement the sea bases, the WDA is developing a series of land-based logistics hubs positioned in key locations around the world in friendly nations. These hubs will provide essential shore support, training facilities, and repair centers for WDA's fleet and personnel. The agency will be placing these logistics hubs near whaling hotspots and shipping routes, ensuring the WDA can rapidly deploy resources to intervene whenever and wherever necessary, against whaling, or against the shipment of whale products.

These logistics hubs will be developed in a phased approach, with initial bases set up in regions with a high concentration of whaling activity, such as:

- **Alaska:** Located close to known whaling areas, the Alaska hub will allow the WDA to respond swiftly to threats in the Northern Pacific. Additionally, it will serve as a key training ground for cold-water missions and long-range operations for Southern Ocean missions.
- **Hawaii:** A strategic location in the Central Pacific, the Hawaii hub will provide access to whaling routes between Japan and the South Pacific. The hub will support aerial reconnaissance operations and serve as a critical staging area for the WDA's APVs.
- **Mobile Sea Base Southern Ocean (MSBSO):** Situated near the Southern Ocean, this hub will allow the WDA to monitor and intervene in whaling activities that occur in Antarctic waters. It will also be a crucial point for launching operations to disrupt whaling in South American waters and the Southern Hemisphere, essentially anywhere.

Each hub will be equipped with:

- **Training and Simulation:** This will allow WDA personnel to train in realistic scenarios, including boarding exercises, unmanned system operations, and direct-action engagements. Training centers will simulate the conditions faced at sea, preparing our teams for the extreme environments they may encounter during missions.
- **Helicopters:** Using the previously mentioned helicopter with a 1,000nm range, WDA can transfer a host of fuel, equipment, and more across this distance. This is a distance that the whalers are unable to match. WDA is positioned for long-range anti-whaling recon and engagement.
- **Drone and Surveillance Deployment:** Logistics hubs will support the WDA's unmanned operations, serving as ground control stations for drones, UAVs, and AUVs. From these hubs, we will be able to monitor vast oceanic regions in real-time, coordinating interdictions and tracking whaling vessels' every movement, to deploying prop-fouling systems. These assets can be controlled from our ships as well.

By spreading out our logistics and supply chain across multiple global hubs, the WDA ensures that its reach is global, eliminating bottlenecks and keeping our operations at peak efficiency. These hubs will also act as safe havens for the WDA to regroup and prepare for larger-scale operations. These platforms will be guarded by former U.S. Marines, acting as maritime security officers, who will be armed with .50 caliber rifles and handguns and other platform defense munitions and non-lethal deterrence options.

Aerial and Sea Anti-Whaling Supremacy and The Acquisition of Aircraft for Strategic Advantage

Recognizing the importance of long-range surveillance and rapid-response capabilities, the WDA is in the process of searching for a decommissioned military aircraft, including C-130s, Chinook and other long-range cargo and reconnaissance planes. These aircraft will be refitted for anti-whaling purposes, including:

- **Aerial Reconnaissance:** Outfitted with advanced surveillance technology, these aircraft will provide real-time tracking of whaling fleets from thousands of miles away. Their long-range capabilities will allow the WDA to pinpoint the exact location of whaling vessels, giving us a tactical advantage in planning intercept operations.
- **Logistical Support:** These aircraft will also be used to drop supplies, including fuel, food, and parts, to WDA ships at sea. This airborne supply chain extends the range and endurance of our fleet, ensuring that our vessels can stay on station for as long as needed.
- **Rapid Deployment of Anti-Whaling Personnel:** In the event of a large-scale engagement or the need to launch multiple simultaneous operations, these aircraft will provide rapid deployment capabilities. WDA teams can be airlifted directly to sea bases or other vessels, allowing for flexible, on-demand operations.

The aerial advantage gained from acquiring and retrofitting these aircraft will give the WDA unparalleled reach and flexibility outclassing the whalers, ensuring that we can remain one step ahead of the whalers.

To bolster the effectiveness of our global operations, the WDA is actively pursuing strategic alliances with other NGOs, international law enforcement agencies, and sympathetic governments. These partnerships will help strengthen the WDA's ability to gather intelligence, enforce anti-whaling regulations, and provide legal cover for direct-action operations.

As part of its intelligence operations, the WDA will deploy a global network of surveillance assets, including using or deploying nano-satellites when it is needed, maritime radar, and unmanned aerial vehicles (UAVs), Ocean Sound Monitoring and the possible design and introduction of a maritime harpoon cannon detection sensor for long-range identification of whaling activities, in addition to human agents and recruitment of intelligence officers into whaling business for covert sabotage and surveillance through embedded WDA agents that can provide early warning into location, routes and operational plans.

This network will provide 24/7 monitoring of key oceanic regions, ensuring that no whaling fleet can operate in secret. The data collected will be used to track whalers, predict their movements, and launch disruption operations before they can carry out hunts at levels unseen for environmental protection, akin to that of a military force, but within reason and based on plausible deniability for most actions.

Through our strategic alliances, the WDA will work to create international pressure on governments that support or tolerate whaling. Our team will engage in diplomatic channels, launching media campaigns, and organizing public protests in addition to direct-action campaigns, the WDA will raise the stakes for pro-whaling nations, making it increasingly difficult for them to justify their actions on the global stage.

By 2050, the WDA's global logistics and operational network will be fully matured, providing us with the

flexibility, reach, and staying power to disrupt whaling activities anywhere in the world at levels that are 400% above what Sea Shepherd or Greenpeace have done, and at reduced fuel costs for our agency, with some assets having a 75% fuel reduction, which translates down into larger vessels as well, due to them not needing to travel at speed to cover distance, and thus use smaller assets to scout ahead, preserving fuel for critical pinpoint actions. The combination of sea bases, patrol vessels, logistics hubs, and aerial assets will allow the WDA to strike at the heart of whaling operations with precision, persistence, and overwhelming force, with logistical support being at the core of future anti-whaling operations.

In scenarios where traditional aircraft delivery to sea bases is not feasible due to range limitations or the lack of suitable landing infrastructure, the Whale Defense Agency (WDA) has developed contingency plans that include airdrop operations for crew deployment. Though a less frequent option, parachute operations remain a viable strategy when rapid access to remote sea bases is necessary, or when landing conditions are unsafe or unavailable, or whenever WDA must provide overwhelming boarding power onto a whaling vessel, it can do so in a targeted, precise way, and in unpredictable ways as well, via the air.

These parachute operations allow the WDA to deliver specialized teams directly onto sea bases or nearby vessels, enabling immediate intervention and resupply efforts. This method provides a unique tactical advantage, ensuring that even in the most isolated areas of the ocean, WDA personnel can quickly mobilize and maintain operational pressure on whaling fleets. These crews would deploy from refitted C-130s outfitted for anti-whaling missions, and featuring a host of complex new anti-whaling technologies and air engagement systems.

Airdrop Deployment Capabilities

When aircraft landing is impossible, highly trained WDA personnel can be airdropped to sea bases or onto support vessels through parachute operations. This method is effective for critical situations where rapid deployment is essential, such as emergency interventions, sabotage missions, or high-priority reconnaissance operations. These parachute teams are trained for both land and sea landings, ensuring they can safely arrive at their designated points of operation.

In addition to personnel, essential supplies such as food, medical equipment, fuel, and technical gear can also be airdropped. Precision-guided parachutes allow for safe delivery of sensitive equipment to sea bases, ensuring sustained operations even when logistical chains are stretched thin.

WDA's personnel are trained in military-grade parachute operations to ensure safe and efficient drops in varied weather conditions. Often times our crew are retired military members, often from the Marines, Airforce and Navy (including special forces and those who have been tasked in their prior military duties with defending warships, naval installations and nuclear systems of the military or other force protection missions). This training they have from prior military service includes not only parachuting onto ships, bases but also the rapid setup of temporary operational outposts on the water, and land from which further missions can be launched.

While this method is less common for WDA to use parachute based deployment, the flexibility it offers allows WDA to overcome extreme logistical challenges, ensuring that operations can continue even in the most remote and hostile environments. Parachute operations provide a critical backup solution, reinforcing WDA's commitment to being always ready and able to respond to the threats faced by whales, no matter the obstacles.

Given the complexity and intensity of the Whale Defense Agency's (WDA) operations, traditional

volunteer roles are not always suitable for many of the advanced missions and tactical operations we undertake. Due to the high-stakes nature of our efforts to end whaling by 2050, the recruitment process at WDA places stringent requirements on candidates than other anti-whaling NGO's and charities, especially for roles that involve direct action, maritime enforcement, and tactical engagement and planning. Typically, WDA recruits mostly retired military officers for duties at sea, for adviser roles and more.

Specialized Recruitment and Training

WDA's recruitment process demands extensive knowledge and experience in areas such as medical emergency response, maritime navigation, tactical boarding, and other remote operations, including base setup and sabotage acts. Each recruit must be well-versed in handling extreme environments, coordinating with unmanned systems, and maintaining operational security under high-pressure conditions, and even when conducting investigations, able to present credible cover stories for those who may catch on to you, in order to further distract and deter them. This level of expertise ensures that every mission, especially those requiring ship boarding, high-speed interception, and unmanned system deployment, is carried out with precision and professionalism, with the same values these Marines hold dear to themselves, as they performed duties in their past for our nation following the same morals and values as if they were an Active duty Marine.

While WDA emphasizes high-level expertise for its anti-whaling officers and special operations teams, volunteers remain an essential part of the broader mission. Volunteers play a critical role in maintaining and operating sea bases, land facilities, and logistics hubs that support our direct-action teams. These volunteers assist in coordinating essential services such as resupply missions, communications support, fundraising and base maintenance, enabling retired frontline Marine officers to focus entirely on engaging whaling vessels and disrupting whaling activities.

Central to WDA's mission to end whaling by 2050 is the strategic formation of alliances and partnerships with other anti-whaling NGOs, as well as governments, environmental organizations, and international bodies, and technology sector partners. We recognize that while the Whale Defense Agency leads the charge in technological innovation and direct engagement, collaborative efforts are crucial to maximizing global pressure on whaling fleets and ensuring international compliance with anti-whaling regulations and the establishment of the Anti-Whaling Enforcement Coalition.

WDA's partnerships will involve:

- **Operational Engagement:** Coordinating joint operations with other anti-whaling NGOs to maximize the effectiveness of sea-based interventions. This includes coordinated ship-boardings, intelligence sharing, and synchronized patrols.
- **Intelligence Sharing:** Pooling resources and intelligence networks to track whaling vessels, identify key players in the illegal whaling supply chain, and share data on whaling fleet movements.
- **Legal and Advocacy Support:** Working alongside legal teams and advocacy organizations to push for stronger international regulations and legal actions against governments supporting whaling.
- **Logistical and Financial Support:** Providing resources such as unmanned systems, patrol vessels, or personnel to assist partner NGOs in their anti-whaling efforts when needed.

WDA will maintain a constant and formidable presence against whaling operations on a global scale, unlike anything ever witnessed, or ever imaginable. Whether it be through direct engagement with whalers at sea, the deployment of sophisticated anti-whaling technology, or through coordinated international pressure or advanced tactics, WDA will ensure that every avenue is pursued to meet its goal of ending whaling by 2050, including weaponizing the whalers tactics against them and undermining their strategies they have built up over the last decade or more against Sea Shepherd and flip it on its head overnight in terms of their ability to understand the anti-whaling movement effectively.

These whaling operators have operated under the assumption they will always win or always find a solution to their issue. WDA core objective is to disrupt this cycle, with constant innovation that makes almost every strategy they plan, already countered. Everyday, something new could be posted, and what we don't post, is what they should fear the most, because what we've shown is only the tip of the iceberg in terms of what we have planned.

It is unlikely, given the WDA is at least 10 years ahead of the whalers in this process, that they will ever likely recover from this advanced level of anti-whaling. Unlike SSCS who uses the same tactics each time, for us, every campaign at WDA could use new technology that is both disclosed and un-disclosed, in addition to these past methods. WDA can stop the whalers prop-fouling efforts, we now have the capability. Prior to WDA launching, we've had the capability to act as just a private person at this level for many years. We're just disclosing it, but it's pretty old technology, but only recent for the whalers. Usually when we've disclosed something, we usually have something even better than that. This ensures when the whalers learn one tactic, a new one is deployed in weeks not years, due to our early approach and projection planning on how the whalers respond, we can defeat them.

Seabases and Logistics Hubs Supporting Global Operations

The WDA's new innovative use of these sea bases and logistics hubs is a core aspect of the 2050 plan. These mobile or fixed installations provide crucial infrastructure that allows for sustained operations in remote ocean regions, far from land-based support systems or hostile nation states. With these facilities strategically placed in high whaling activity zones, WDA will ensure that its vessels and unmanned systems remain fully operational and capable of rapid deployment.

- **Mobile Sea Bases:** These are retrofitted retired ships, which serve as floating command centers, bunkering ships and resupply hubs. Capable of hosting crews for extended periods, these sea bases are equipped with the necessary fuel, repair equipment, and even medical facilities to support long-term anti-whaling missions. These bases also function as mobile reconnaissance stations, utilizing drones and unmanned underwater vehicles to monitor vast areas of ocean for whaling activity.
- **Land-Based Logistics Hubs:** WDA plans to acquire and retrofit retired naval installations, airfields, and coastal facilities in regions like Alaska, Hawaii, and other strategic locations. These logistics hubs will serve as training centers for anti-whaling officers, as well as key resupply points for ships and aircraft. Advanced training in maritime tactics, ship-boarding techniques, and drone operation will be provided at these facilities, ensuring WDA's personnel are prepared for every mission. This is where volunteers who want to be more active in the mission will be further trained before actions at sea. So despite not having prior military experience, volunteers can indeed join the agency's plan to defeat whaling by 2050.

- **Airdrop Capabilities for Remote Access:** In situations where direct delivery of personnel or supplies to sea bases is not feasible with helicopters or is out of range, WDA will utilize airdrop capabilities to deploy crew members or essential equipment. This ensures that even in the most remote parts of the ocean, where whalers often operate undisturbed, the WDA can maintain its operational presence.

The WDA's plan to end whaling by 2050 is a strategic, calculated, and technologically advanced campaign designed to break the back of whaling operations once and for all. It's designed to be this overwhelming on purpose. Our fleet of advanced patrol vessels, like the APV and the Barracuda, will be unmatched in speed and operational range. Combined with our unmanned systems, seabases, and partnerships, whalers will no longer have the operational freedom they once enjoyed, nor the legal threats they once relied upon, as our tactics mostly rely on covert engagement to destroy their "video documentation" at sea, and thus their ability to wage legal battles. With this, WDA can control the flow of information, thus affecting their ability to react, and this is one way we will do that.

Even with government support on the side of whalers, the WDA's capabilities will ensure that no whaling operation is safe from intervention, and if arrests are made of any WDA assets or crew, pre-planned actions are in place to send a critical strike on the fleet. By 2050, our relentless efforts and unmatched technological innovations will make whaling a dwindling practice, either eliminated entirely or reduced to an insignificant level of global activity — at which point international regulatory enforcement can step in to monitor and ensure compliance.

The future of our oceans is at stake, and the WDA's advanced plans provide the only credible path forward to end whaling forever, and the only known public plan, to do so by this time frame.

Advanced Technologies and High-Speed Assets | The Game Changers

A critical element of the Whale Defense Agency's (WDA) strategy to end whaling by 2050 is the deployment of advanced technologies and high-speed maritime assets. These systems and vessels are designed to not only intercept whaling ships but to also neutralize their ability to kill whales. The WDA's commitment to investing in cutting-edge innovation will ensure that whalers can no longer operate freely on the high seas, no longer document anti-whaling actions, and thus no longer control the public narrative around whaling.

The Anti-Poaching Vessel (APV)

As the flagship of WDA's fleet, the APV is the world's fastest unarmed civilian patrol vessel, specifically designed for environmental protection and anti-whaling missions. With a top speed of over 60 knots and a range of over 1,300 nautical miles at full speed, the APV can quickly intercept whaling ships, no matter how far they operate from their support vessels. This capability ensures that no whaling vessel can outrun or evade our patrols.

Moreover, the APV's operational flexibility allows it to remain on station for extended periods, over 10,000 nautical miles at cruising speeds, monitoring and disrupting whaling activities. This is complemented by the vessel's state-of-the-art surveillance and communication systems, which provide real-time intelligence on whaling fleet movements and enable the APV to coordinate with other vessels

and unmanned systems.

The High-Speed Hybrid Submarine (HSHS)

The HSHS, a revolutionary high-speed hybrid submarine, is another cornerstone of WDA's offensive capabilities in development, but is not yet disclosed on our website. With its ability to travel at over 100 knots on the surface and operate submerged for up to 360 days without refueling on hybrid propulsion or full electrical propulsion, the HSHS provides unparalleled versatility and stealth in anti-whaling missions. Its underwater capabilities allow it to evade and complicate detection by whalers and governmental forces while remaining within striking distance of whaling vessels.

The HSHS is equipped with a comprehensive array of unmanned underwater vehicles (UUVs), which can perform surveillance, conduct prop-fouling operations, and even engage whaling vessels directly. This vessel represents the cutting edge of WDA's technological innovation and is expected to cause a significant shift in how the whalers operate, think and conduct whaling.

Unmanned Systems

The WDA will leverage a suite of unmanned aerial, surface, and underwater vehicles to enhance its operational reach and effectiveness. These systems will serve as force multipliers, providing continuous surveillance, intelligence, and operational capabilities far beyond the reach of manned vessels, and far beyond the whalers current capabilities.

- **Aerial Drones:** With ranges up to 1,000 nautical miles, WDA's aerial drones will provide round-the-clock intelligence on whaling fleet movements, feeding real-time data back to patrol vessels and seabases. These drones will also be equipped with deterrent payloads, such as liquid air dispersion systems (similar to butyric acid but legally compliant, this is helix-87 solution), designed to disrupt whaling operations without causing harm to the environment.
- **Unmanned Surface Vessels (USVs):** Capable of over 1,500 nautical miles of range at speeds exceeding 25 knots, USVs will autonomously track whaling vessels and conduct prop-fouling operations. These systems will be crucial in disabling whaling ships before they can harpoon whales, effectively neutralizing their hunting capabilities. These USV's have ranges of over 2,800 nautical miles unrefueled and 30 knot speeds, allowing WDA to engage the fleet from this distance - over TWO THOUSAND MILES away. They are engineered to tail a harpoon ship at over 30 knots, for over 1,500 nautical miles without stopping and without refueling during a chase, so they can operate at a harpoon ships max speed, and these are only 17 meter vessels, and they come close to outranging the Yushin Maru which are over 60m long, and they USV's can be replaced by other USV's out of range who are refueling to take over, so it can create a cycle that the whalers will find very frustrating. We can stay with the fleet with these USV's in ways no other anti-whaling NGO has. This document is only a glimpse into the approach of WDA. It's just the tip of full scale operations, so yes, the whalers are wholly un-prepared for the WDA's approach.
- **Unmanned Underwater Vehicles (UUVs):** UUVs will play a key role in covert surveillance and direct action against whaling vessels. Operating undetected beneath the waves, these systems can perform long-duration monitoring of whaling fleets, gather intelligence on their activities, and even engage in sabotage missions by fouling their propellers or disrupting critical onboard systems, and even deploying thermal breaching engagement tools.

WDA's operational strategy hinges on the establishment of a comprehensive plan of seabases and logistics hubs across the world's oceans. These bases will serve as command and control centers, providing operational support, resupply, and staging areas for direct-action missions. With these bases, the WDA can extend its reach into the most remote regions, where whalers often operate without oversight.

Mobile Seabases

WDA will retrofit decommissioned ships into mobile seabases, capable of providing extended support for anti-whaling patrols. These mobile bases will be strategically deployed in whaling hotspots to enable rapid response and sustained operations. Fully equipped with fuel, repair facilities, medical stations, and unmanned system deployment capabilities, these mobile seabases will allow WDA vessels to remain in the field for longer durations without needing to return to port.

In situations where direct resupply is impossible due to distance or operational constraints, WDA will utilize airdrop methods to deliver essential personnel or equipment. Parachute operations could be employed for emergency crew insertions onto mobile seabases, ensuring the agency remains operational even in the most challenging circumstances.

Land-Based Logistics Hubs

In addition to mobile seabases, the WDA will acquire and convert retired naval bases and airfields into logistics hubs. These hubs, located in strategic areas such as Alaska, Hawaii, and coastal regions near whaling grounds, will support both land-based and sea-based operations. They will also serve as training centers for WDA anti-whaling officers, where recruits will receive rigorous training in maritime operations, ship boarding techniques, drone systems, and medical response.

These hubs will also facilitate long-range aircraft operations, including the deployment of surveillance aircraft such as modified C-130s, which can provide aerial reconnaissance and support for anti-whaling patrols. Aircraft stationed at these logistics hubs will be capable of monitoring large ocean areas, providing real-time intelligence and ensuring the whaling fleet remains under constant surveillance.

As the WDA expands its operational capacity and begins more aggressive anti-whaling campaigns, we fully expect government interference, particularly from nations supporting whaling. This could involve attempts to arrest anti-whaling activists, tail WDA vessels, or use coast guard and military forces to disrupt operations.

WDA has already prepared countermeasures to ensure that its operations remain unhindered:

With vessels like the APV, HSHS, and the Barracuda, WDA can outrun and outmaneuver all whalers, and most government patrol vessels, including those of the Japanese Coast Guard. These assets will ensure that WDA vessels are untouchable in any pursuit, allowing them to evade capture and continue their mission unhindered.

WDA's legal advocacy division will provide robust defense strategies for any activist facing extradition or legal action. Leveraging international law, and destroying the tactics of the whalers by design and engineering and seeking the support of sympathetic governments, WDA will protect its personnel from government overreach through systematic disruption of these approach lines, and their interference in the lives of the citizens of other western nations, disrupting their culture and love for whales, rights and way of life, threatening people and the economy of nations.

WDA’s plan to end whaling by 2050 is a highly strategic, technologically-driven campaign designed to cripple the whaling industry through constant disruption, direct-action engagement, and global pressure and persistent innovation that continues every single day. With the world’s most advanced maritime assets, unmanned systems, and a global network of bases, WDA will ensure that no whaling operation can continue without facing overwhelming opposition. They will be forced to return to port, or face overwhelming force, and lack of security.

As we move forward, whalers and their government backers will realize that WDA’s ability to outpace, outsmart, and outmaneuver them at every turn will make their operations not only unprofitable but impossible to sustain. Whaling will no longer be a viable option, and by 2050, it will either be eradicated or reduced to insignificance, thanks to the Whale Defense Agency’s unwavering commitment to the oceans and the protection of whales.

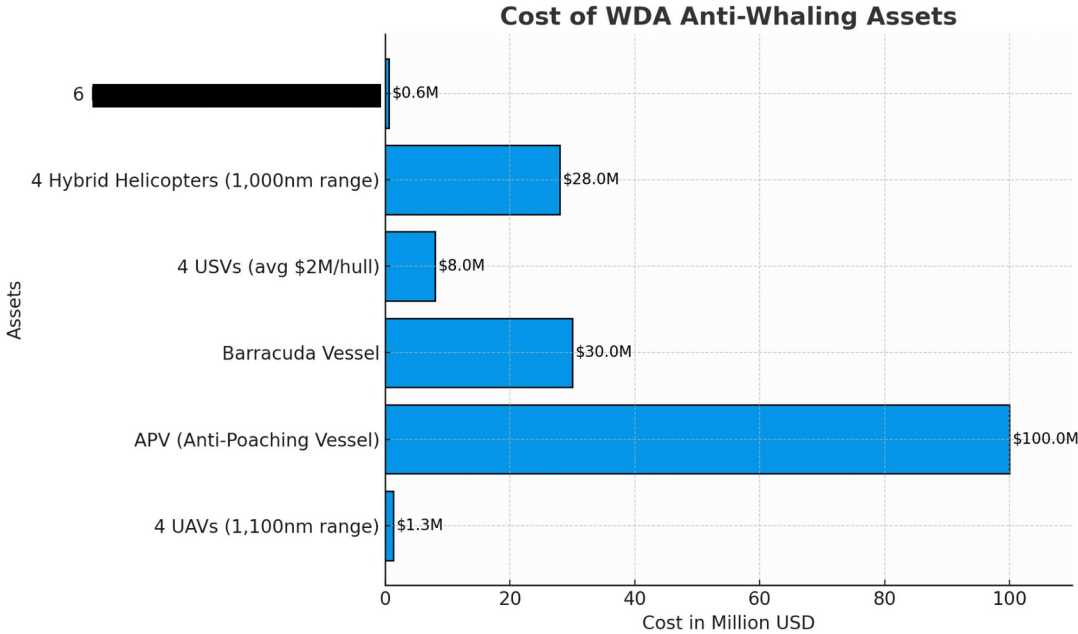


Image: Cost of WDA assets for anti-whaling sea control 2050

The Final Push to End Whaling by 2050

The Whale Defense Agency (WDA) stands at the forefront of the battle to eradicate whaling, leveraging unmatched technology, planning, strategic intervention, and global partnerships to ensure that whalers are unable to continue their destructive activities.

We recognize that achieving this vision requires more than just the work of our anti-whaling officers and advanced vessels at sea; it requires the support of people like you — those who believe in the protection of our oceans and the preservation of these magnificent creatures.

Whether you're looking to get involved as a **volunteer**, a **donor**, or a **partner** in our initiatives, now is the time to take action. With the world watching and momentum building, your support can make the critical difference in turning the tide against whaling once and for all.

More Info: www.whaledefenseagency.org/2050-plan

This document was produced by the Whale Defense Agency's for profit firm, AWT, a technology division for advanced anti-whaling research and technology development and strategic whaling analysis. AWT acts as a WDA think tank, providing WDA with insights into whaling assets and disruptive processes and technologies to outsmart whaling leadership and tactics at military levels, including using strategic maritime and naval simulation analysis programs to pre-plan massive engagements in the digital space against customized digital whaling ship assets confronting digital assets of WDA in various scenarios and engagements.

AWT will provide services to WDA, enabling their forces to defeat whaling at unmatched speed, range and precision.

AWT is a private registered entity, with no public reporting and no public facing website or digital infrastructure beside reports and other data provided to WDA, which it can choose to disclose or withhold.